

TECHNICAL DATASHEET

PENOSIL Window Tape Full Glue+1 External

Penosil Window Tape Full Glue+1 External is a joint tape to cover window and door joints from outside.

- Allows water vapour diffusion from inside to outside.
- Protects the joint and building structure from getting wet.
- Protects the joint and building structure from wind.
- Acrylic adhesive has excellent adhesion to all of the most common construction materials.
- Nonwoven adhesive on one side of the joint tape provides strong and airtight bond with various construction materials.
- The adhesive stripes on both sides of the joint tape allow its use before or after installation of windows and doors.
- The material of the joint tape can be plastered and painted.
- Stretchable in width, resists movement of the wall structure.

Fields of application

For protecting window and door joints and building structures from getting wet and wind.

Application conditions

Application temperature range: from -5 °C to +30 °C.

Application instructions

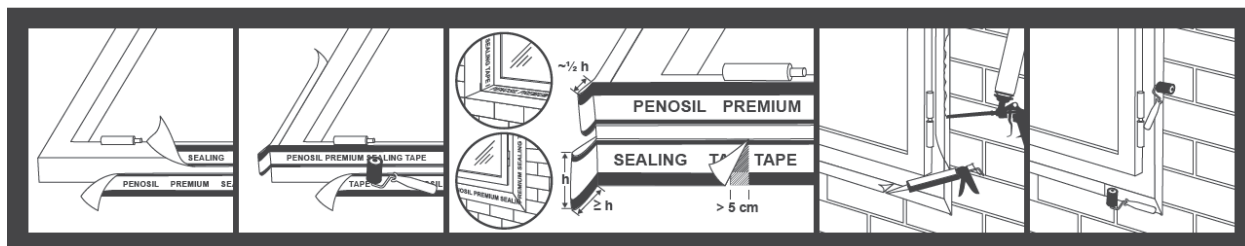
Installation surfaces must be clean and dry, free from oil, grease and dust. Do not clean the surfaces with chemicals containing substances impairing or reducing bonding. Roughness, unevenness or porosity may reduce bonding. Non-bonding surfaces should be stabilised by priming. For this it is recommended to use PENOSIL Premium Prime&Fix spray primer.

Installation tape should be unwound from the rail and cut to the desired length. Remove the protective film from the adhesive strip and install the tape on the window jamb. If the window or door is installed flush with the wall, leave one tape width in reserve in the corners (see the figure). If the window or door is installed inwards in relation to the wall, leave a half tape width in reserve in the corners (see the figure). The tape is glued along the entire perimeter of the frame, starting from the lower window strip (lower strip). Follow the same procedure with all sides to be sealed. Then align the window or door jamb, fasten it properly and fill the window joint with construction foam. After the foam has completely set, remove the excess foam and fasten the other edge to the window recess/wall. For an optimal adhesive bond, use a pressure roller.

The adhesive strips on both sides of the window tape allow use of the joint tape before or after installing the windows/doors and assembly foam. For an optimal adhesive bond, use a pressure roller.

If the adhesive strip gets dusty or loses its bonding properties for some other reason, a PENOSIL Premium SpeedFix All Exterior 777 adhesive sealant may be used to fasten the joint tape.

The joint tape must be covered as soon as possible but no later than three months after installation of the joint tape.



Technical data

Properties	Unit	Value
Water vapour permeability Sd (EN 12572)	m	1,2
Adhesive weight	g/m ²	200 ± 20
Adhesive strength (EN 1928, steel plate, 180°)	N/24mm	<35
Tensile strength (EN 12311, sample A 50mm)	MPa	8 ± 2
Ultimate elongation (EN 12311, sample A 50mm)	%	30 ± 10
Watertightness 2 [h] (EN 1928, method B)		minimum 200mm H ₂ O
Airtightness (DIN EN 1026)		air tight
Inclined rain resistance (DIN EN 1027)		water tight / 9A
UV resistance	months	3
Temperature resistance	°C	-40 - +80
Application temperature	°C	-5 - +30

Colour

White.

Package

Packed in a cardboard box. 25m per roll. Widths 70mm, 100mm and 150mm.

Storage conditions

The guaranteed storage period is 12 months from the date of production subject to storage in the sealed original packaging, watertight and in a cool, dry location at a temperature from +5°C to +25°C. Protect from direct sunlight, heat radiation, dust, humidity and chemical vapours.

Safety

Follow basic hygiene requirements. Empty the packaging thoroughly and dispose of it in accordance with regulations.

Note The advice provided in this documentation is based on the manufacturer's tests and is shared in good faith. Due to the diversity of materials and substrates and the wide range of possible applications beyond our control, the manufacturer cannot accept any responsibility for the results obtained. We recommend conducting preliminary tests to determine the product's suitability in a particular application location.